



**SAN ANTONIO WATER SYSTEM**  
**Dos Rios Water Recycling Center (DRWRC) Digester Mixing and System**  
**Enhancements, Phase II**  
**SAWS Job No. 11-6502**  
**Solicitation No. B-13-043-MF**

**ADDENDUM NO. 2**

**To Bidder of Record:**

This addendum, applicable to the project referenced above, is an amendment to the bidding documents and as such will be a part of and included in the Contract Documents. Acknowledge receipt of this addendum by entering the addendum number and issuance date in the space provided in the bid proposal.

**Revisions to Contract/Technical Specifications:**

1. Section 15060, replace Paragraph 3.5.B:

“B. See Specification Section 11005.”

with the following Paragraph:

“B. Pressure gages for liquid service shall be 4-1/2 inch DIAL, 0-60 psi black aluminum case, 316 stainless steel diaphragm seal, glycerin filled, ½ inch NPT process connection on bottom of gage. Filler/Breather cap shall be provided.”

2. Section 15114, add Paragraph 2.9:

“2.9 QUICK CONNECT COUPLINGS

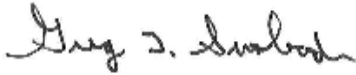
A. Couplings shall be of the cam and groove type. Male adapters shall be designed to receive a female coupler without requiring threading, bolting, or tools. Connections shall remain tight and leakproof under pressures up to 100 psig. Each adapter shall be furnished with a dust cap complete with an 18-in long security chain of corrosion resistant material. Units shall be “drip proof”, providing totally dry connections and disconnections. Adapters shall be aluminum, or as required by the installation and approved by the Engineer.”

**Revisions to Drawings:**

1. Drawing No. 01C105
  - a. Add General Note No. 4. “4. Contractor shall field verify pipe size and material prior to ordering materials for connecting to existing piping.”
2. Drawing No. 01C106

- a. Add General Note No. 4. "4. Contractor shall field verify pipe size and material prior to ordering materials for connecting to existing piping."
- 3. Drawing No. 03M202
  - a. For modifications to this drawing, refer to attached Drawing 03M202.
- 4. Drawing No. 03M203
  - a. For modifications to this drawing, refer to attached Drawing 03M203.
- 5. Drawing No. 03M204
  - a. For modifications to this drawing, refer to attached Drawing 03M204.

This addendum consists of two (2) pages, plus three (3) attached documents. The remainder of the bid documents remains unchanged.




---

Greg T. Swoboda, P.E.  
 Project Manager  
 HDR Engineering, Inc.  
 Texas Firm Registration No. F-754



**ACKNOWLEDGEMENT BY BIDDER**

Each bidder is required to acknowledge receipt of this Addendum No. 2 on the Bid Proposal and by his/her signature affixed hereto and file same as an attachment to his/her bid.

The undersigned acknowledges receipt of this Addendum No. 2 and the bid submitted herewith are in accordance with the information and stipulation set forth.

---

**Signature of Bidder**

---

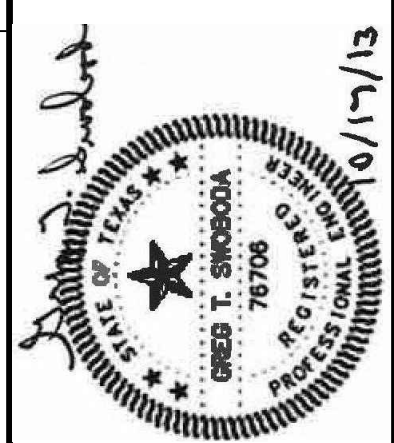
**Date**

END OF ADDENDUM

G.S.	App.	HDR Job No. 174076
ADDENDUM NO. 2	Revisions	
10-17-13	Date	
2	No.	



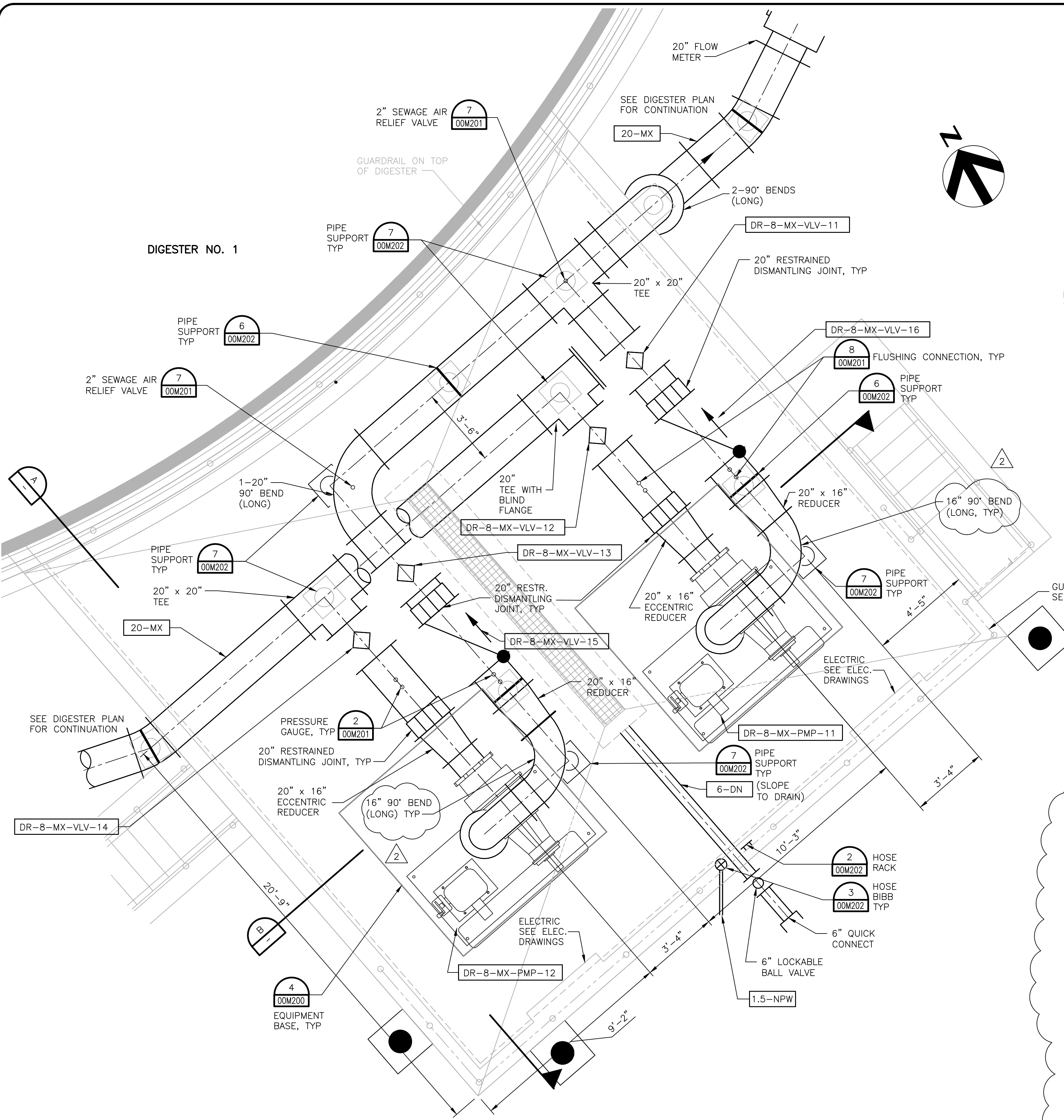
Date: OCTOBER 2013  
 Designed by: K.B.K.  
 Drawn by: R.R.  
 Checked by: G.S.  
 Scale:



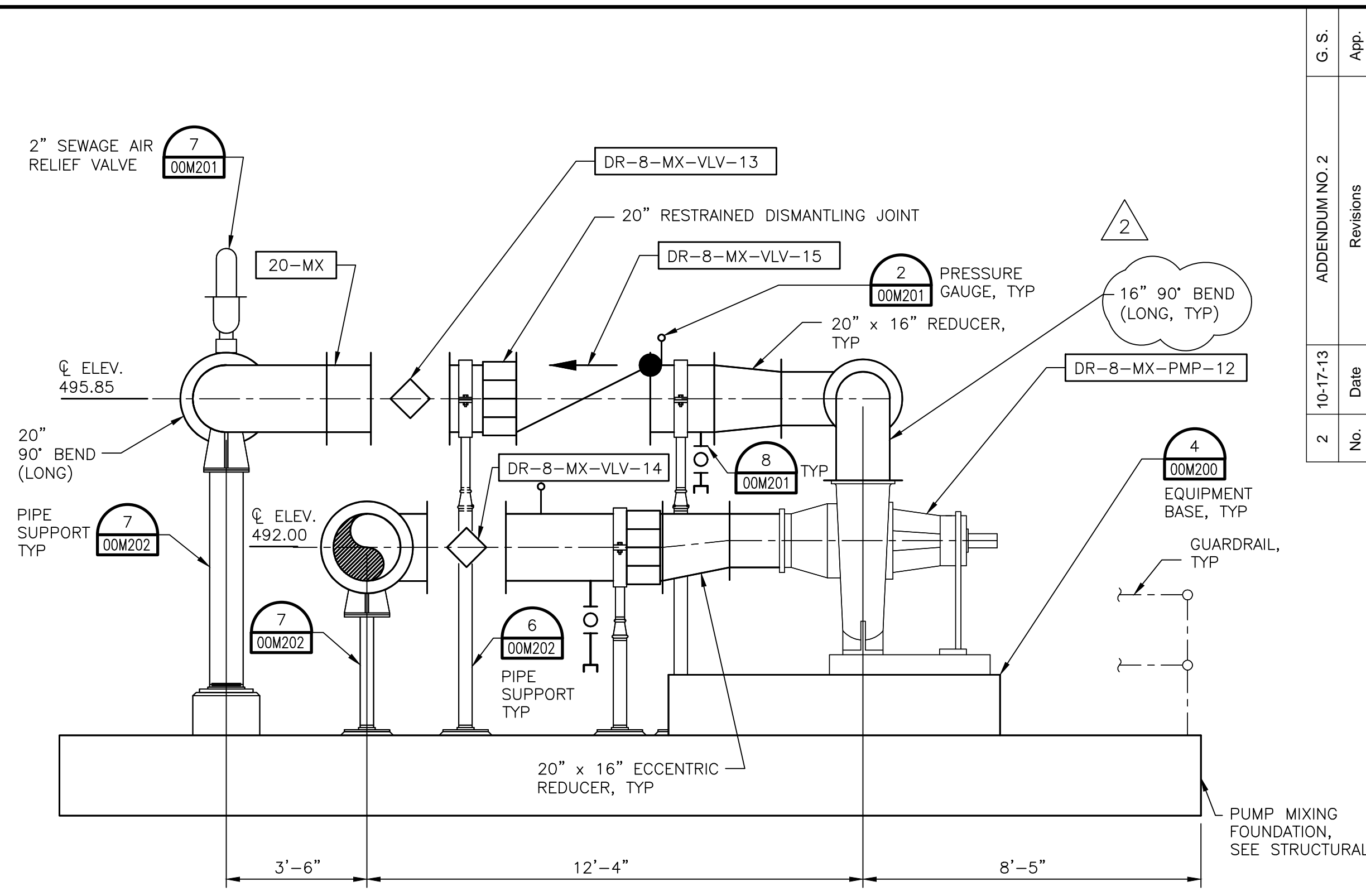
SAN ANTONIO WATER SYSTEM

SAWS Job No. 11-6502  
 DRWRC - DIGESTER MIXING AND SYSTEM ENHANCEMENTS, PHASE II  
 DIGESTER NO. 1 MIXING PUMP PLAN AND SECTIONS

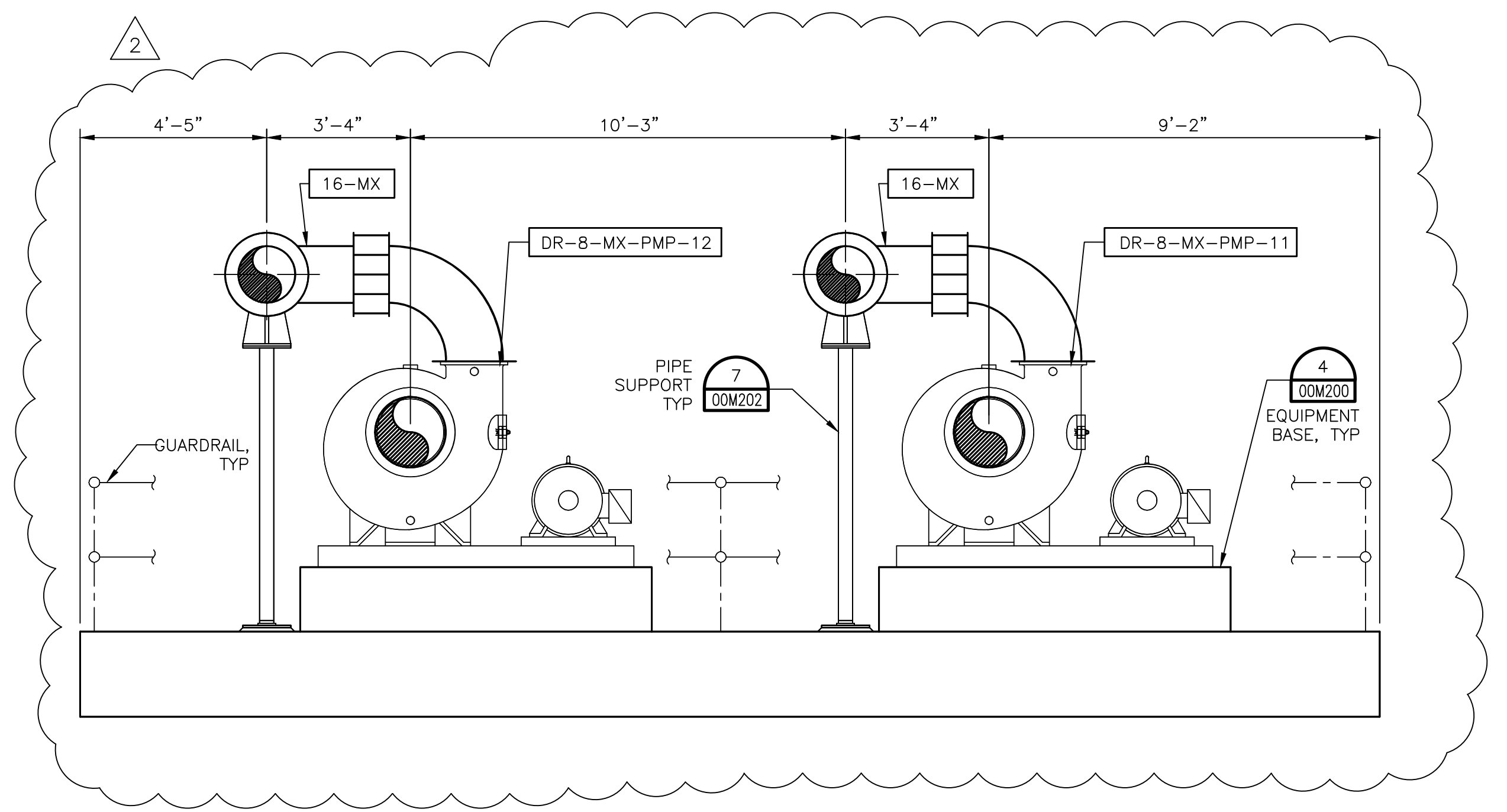
Dwg. No.  
 03M202



**DIGESTER NO. 1 MIXING PUMP PLAN**  
 SCALE 3/8" = 1'-0"



**SECTION A-A**  
 SCALE 3/8" = 1'-0"



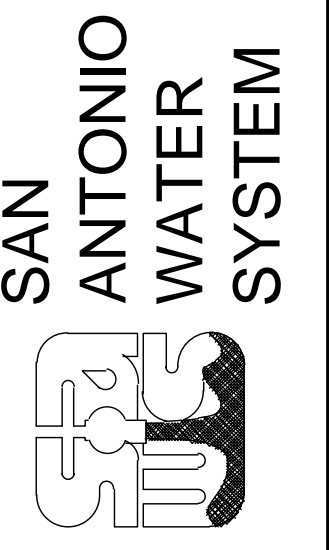
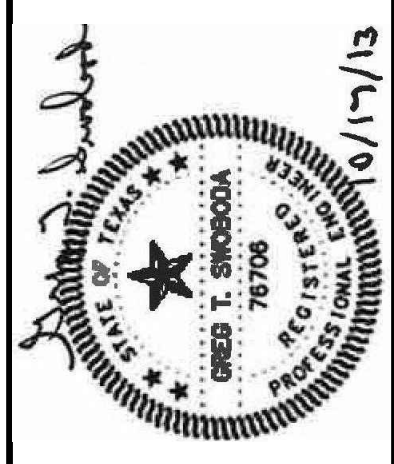
**SECTION B-B**  
 SCALE 3/8" = 1'-0"

BAR LENGTH ON ORIGINAL DRAWING EQUALS ONE INCH. ADJUST SCALE ACCORDINGLY.

G.S.	App.	HDR	Job No. 174076
ADDENDUM NO. 2	Revisions		
10-17-13	Date		
2	No.		



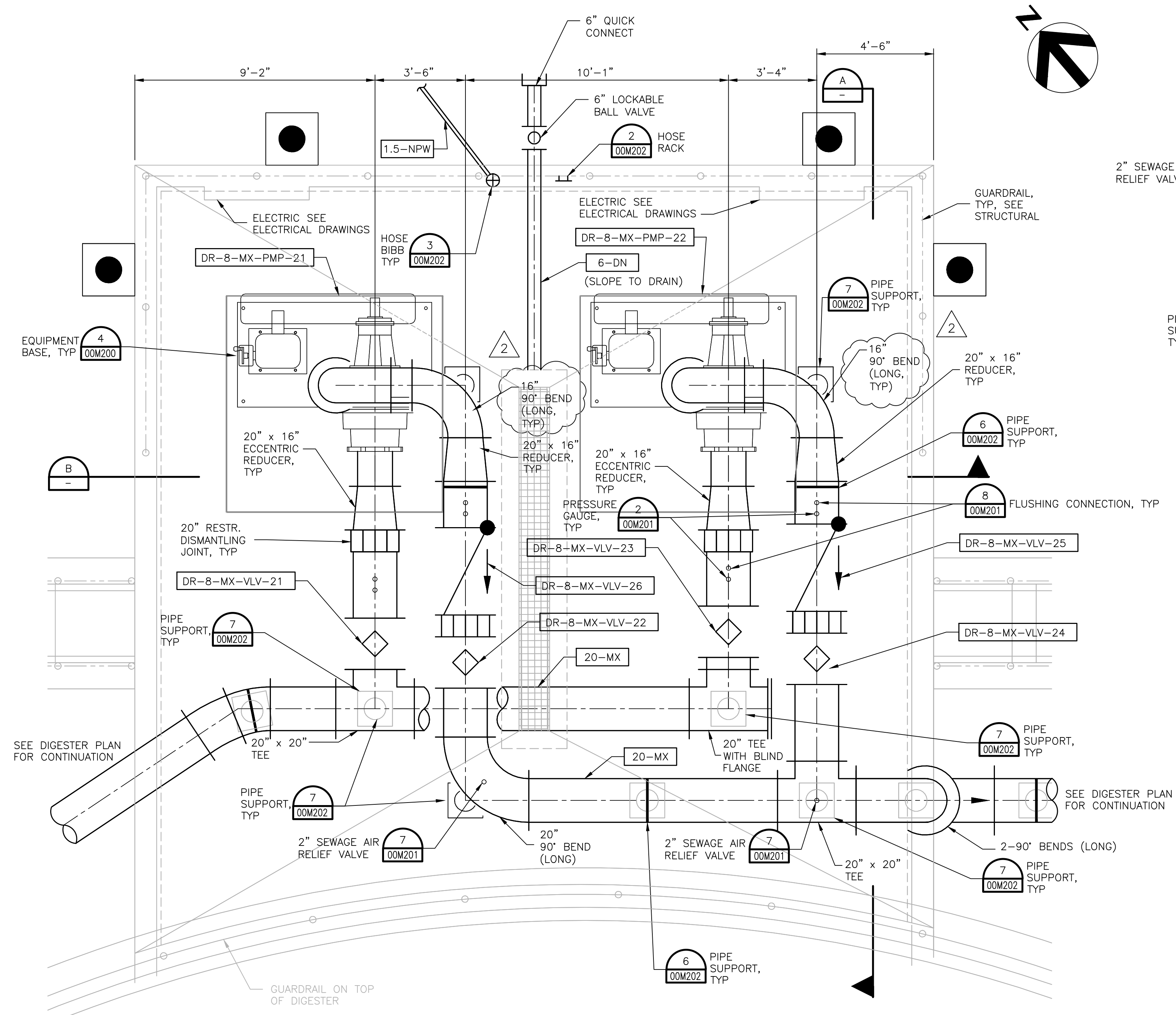
Date: OCTOBER 2013  
 Designed by: K.B.K.  
 Drawn by: R.R.  
 Checked by: G.S.  
 Scale:



SAWS Job No. 11-6502  
 DRWRC - DIGESTER MIXING AND SYSTEM ENHANCEMENTS, PHASE II  
 DIGESTER No.2 MIXING PUMP PLAN AND SECTIONS

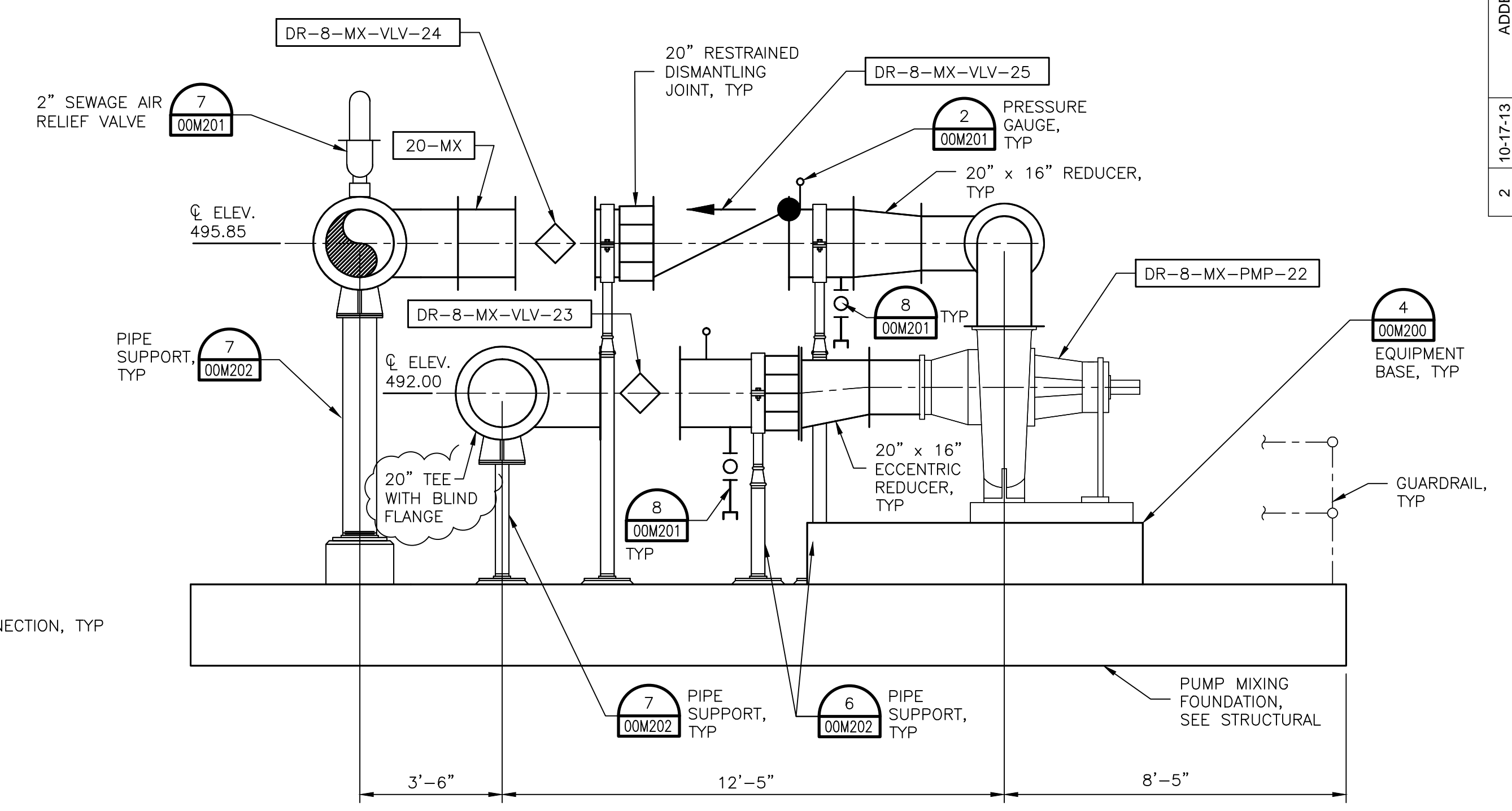
Dwg. No.

03M203

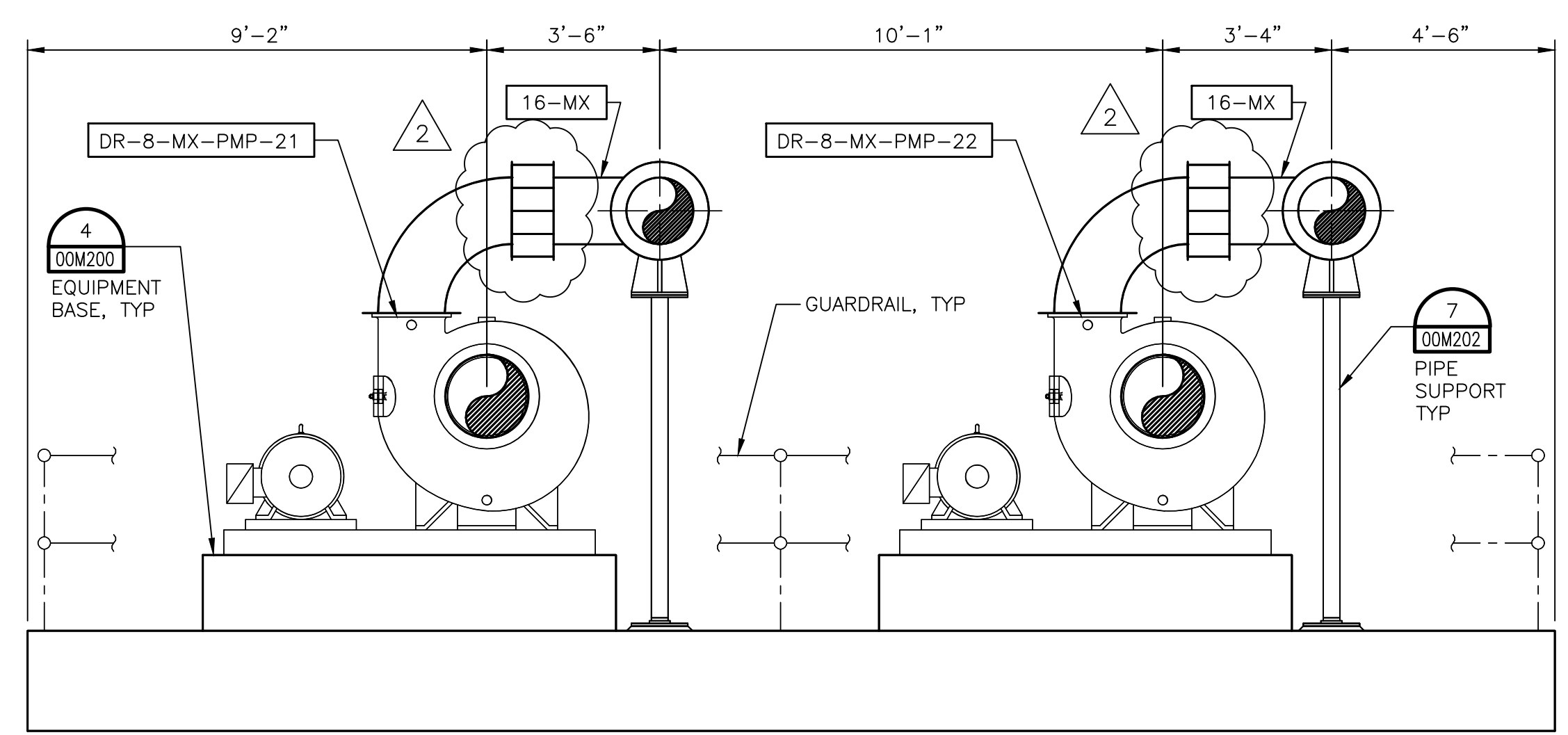


DIGESTER NO. 2

**DIGESTER NO. 2 MIXING PUMP PLAN**  
 SCALE 3/8" = 1'-0"

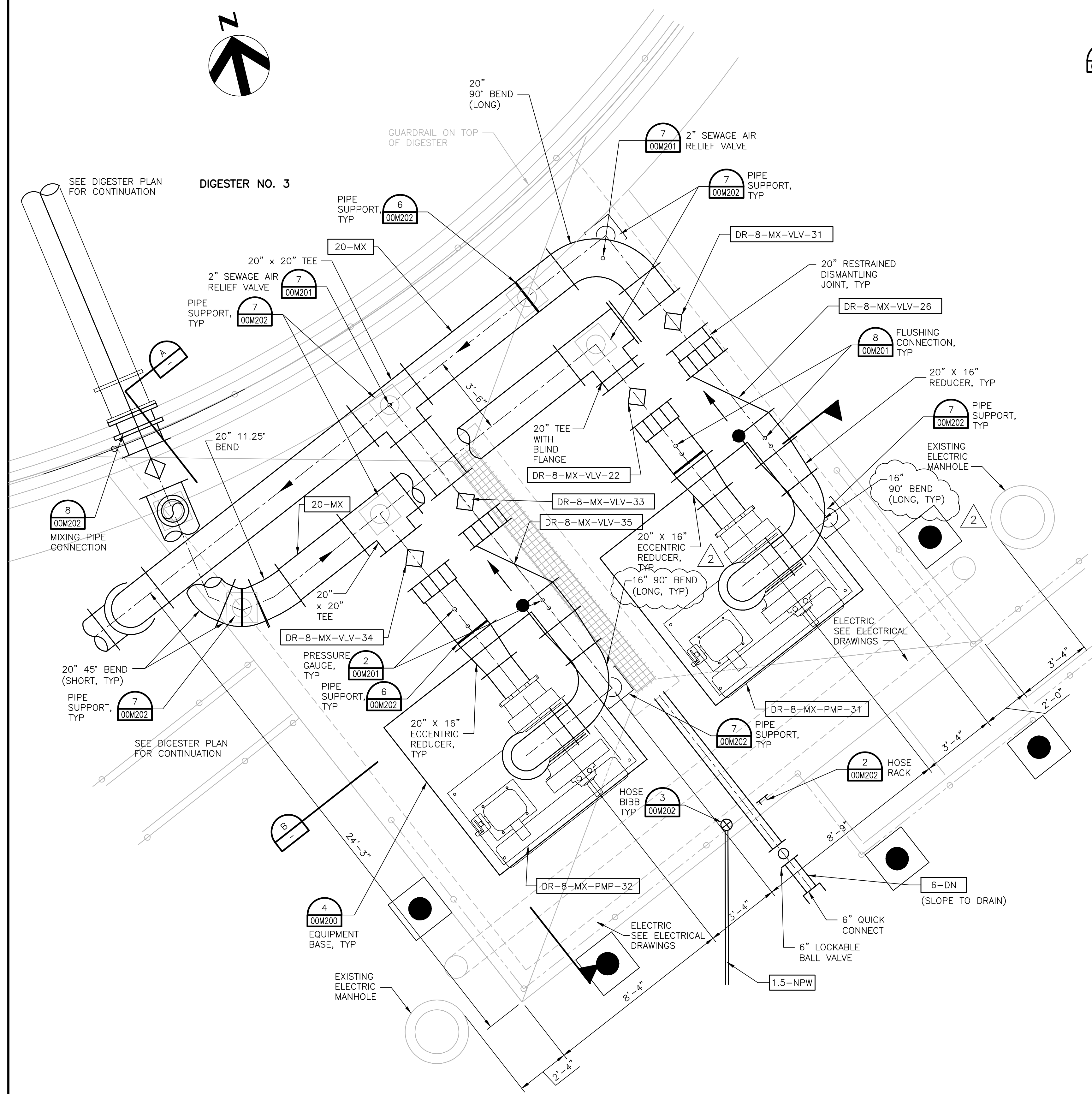
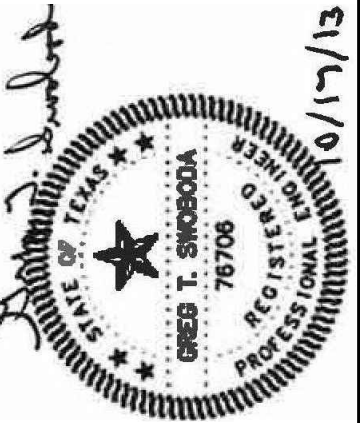


**SECTION A-A**  
 SCALE 3/8" = 1'-0"

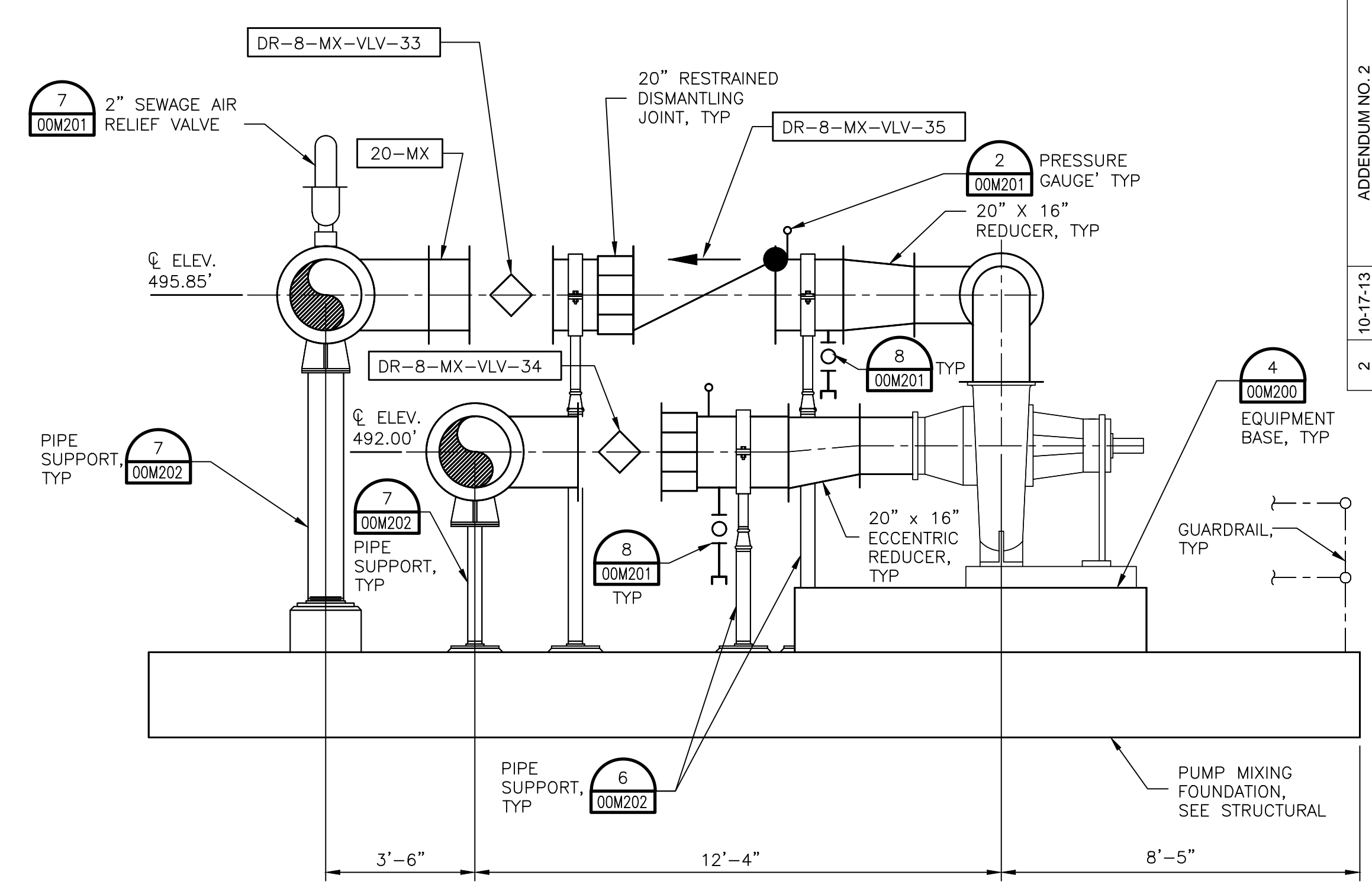


**SECTION B-B**  
 SCALE 3/8" = 1'-0"

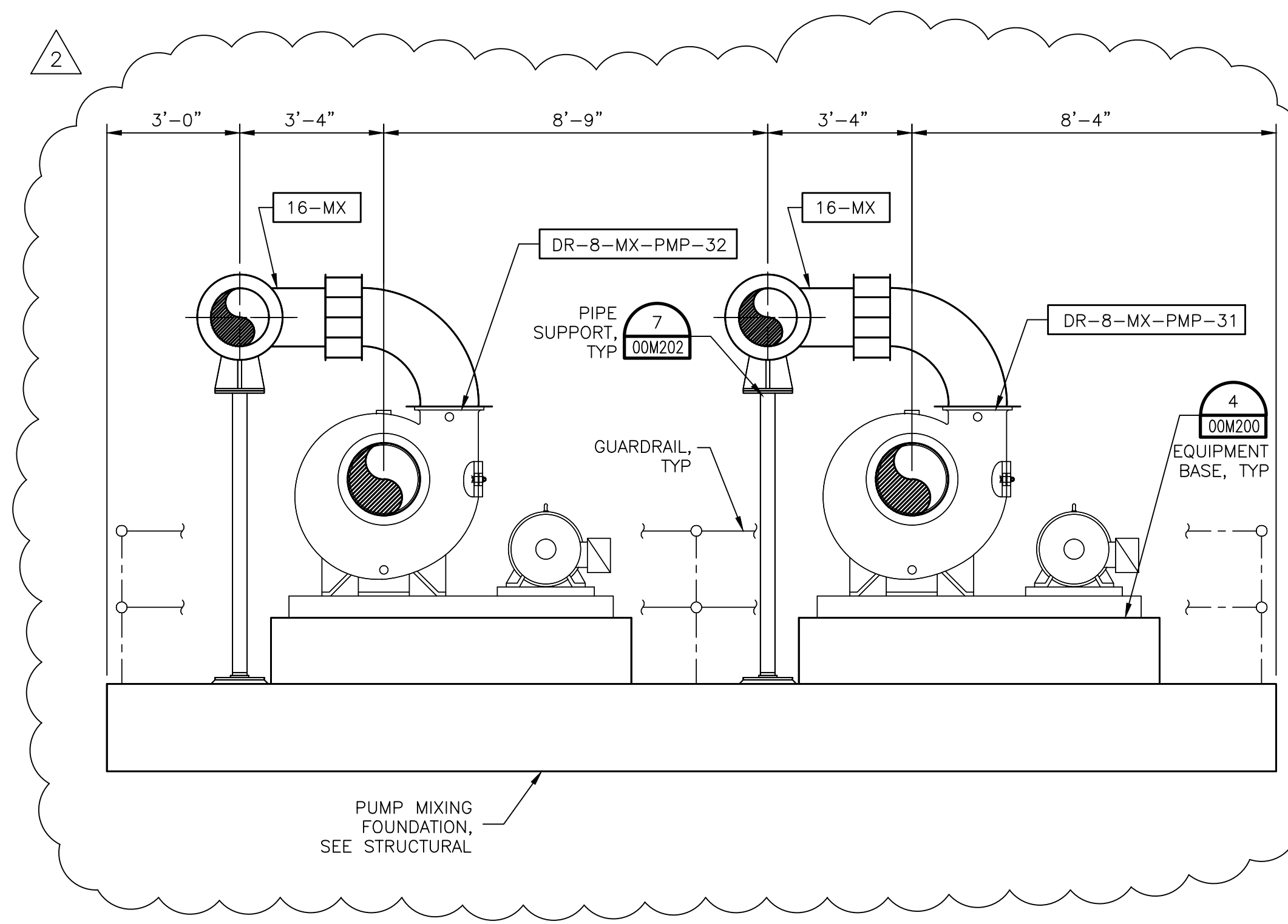
BAR LENGTH ON ORIGINAL DRAWING EQUALS ONE INCH. ADJUST SCALE ACCORDINGLY.



**DIGESTER NO. 3 MIXING PUMP PLAN**  
 SCALE 3/8" = 1'-0"



**SECTION A-A**  
 SCALE 3/8" = 1'-0"



**SECTION B-B**  
 SCALE 3/8" = 1'-0"